

♩ = 202

FENCES

INTRO

PARAMORE - 'RIOT!' (2007)

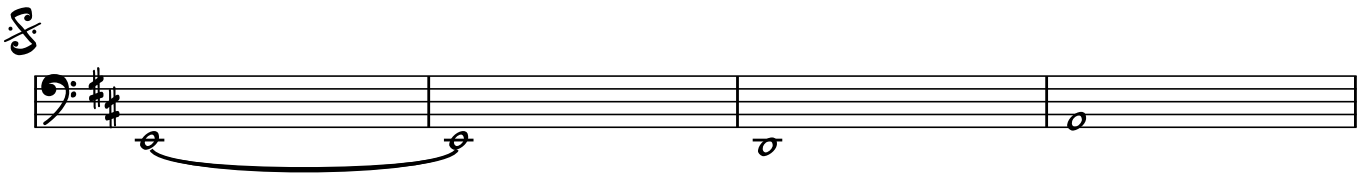
BASS: JEREMY DAVIS



VERSE



PRECHORUS



CHORUS

Musical staff for the first line of the Chorus. It features a bass clef and a key signature of two sharps (F# and C#). The notation includes quarter notes, eighth notes, and rests, with accents (>) placed over several notes.

Musical staff for the second line of the Chorus, continuing the notation from the first line.

Musical staff for the third line of the Chorus, continuing the notation from the previous lines.

TO CODA

Musical staff for the fourth line of the Chorus, ending with a double bar line and a sharp sign (#).

LINK

Musical staff for the first line of the Link section, featuring a bass clef and a key signature of two sharps.

Musical staff for the second line of the Link section, ending with a triplet of eighth notes.

VERSE

Musical staff for the first line of the Verse section, featuring a bass clef and a key signature of two sharps.

Musical staff for the second line of the Verse section, continuing the notation from the first line.

PRECHORUS

D.S. AL CODA

Musical staff for the Prechorus section, featuring a bass clef and a key signature of two sharps. It concludes with a double bar line and a sharp sign (#).

♩

BRIDGE

Musical notation for the first BRIDGE section, consisting of four staves of bass clef music in D major. The first staff starts with a treble clef symbol and contains a melodic line with accents. The following three staves provide harmonic support with various rhythmic patterns and rests.

GUITAR SOLO

Musical notation for the GUITAR SOLO section, consisting of four staves of bass clef music in D major. The first staff begins with a double bar line and repeat sign. The music features a melodic line with various intervals and a final double bar line.

BRIDGE

Musical notation for the second BRIDGE section, consisting of two staves of bass clef music in D major. The notation is similar to the first bridge section, featuring a melodic line with accents and harmonic accompaniment.

CHORUS

The Chorus section consists of four staves of music in bass clef, D major (two sharps). The first two staves are identical and feature a melodic line with eighth notes and quarter notes, including accents and slurs. The third staff begins with a repeat sign and continues the melodic line. The fourth staff concludes the section with a double bar line and repeat dots.

OUTRO

The Outro section consists of two staves of music in bass clef, D major. The first staff contains a simple melodic line of quarter and eighth notes. The second staff continues the line and ends with a triplet of eighth notes followed by a quarter note, marked with an accent and a '3' below the notes.