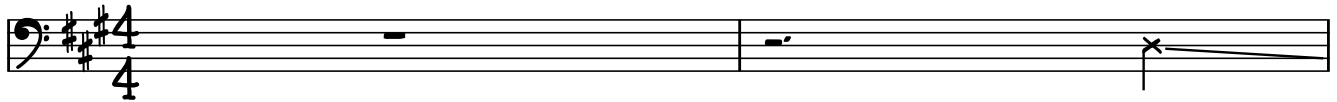


I'M DIGGING YOU (LIKE AN OLD SOUL RECORD)

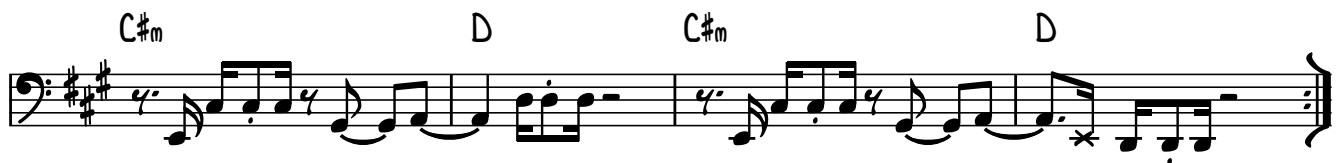
ME'SHELL NDEGECELLO - 'PLANTATION LULLABIES'

BASS: ME'SHELL NDEGECELLO

INTRO



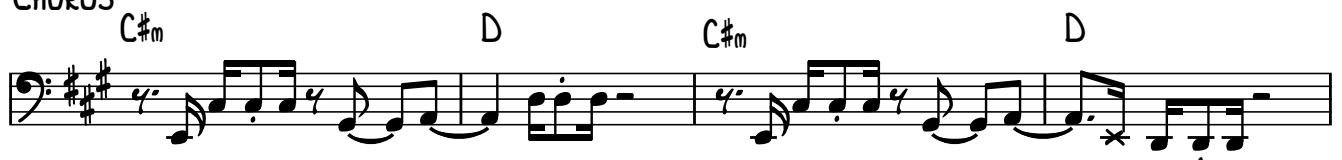
CHORUS



VERSE



CHORUS



2

VERSE 2

Musical notation for Verse 2, consisting of two staves of bass clef music in G major. The first staff has four measures with eighth-note patterns and rests. The second staff has four measures with similar eighth-note patterns and rests.

KEYS/GUITAR SOLO

(w/VARIATIONS ON REPEAT)

Musical notation for Keys/Guitar Solo, consisting of three staves of bass clef music in G major. The first staff is marked G#m11 and has two measures. The second staff has two measures and ends with a repeat sign and 'x5'. The third staff is marked G#m11 and has four measures.

INTERLUDE

KEYS/GUITAR - APPROX. 5 BARS

(DRUM FILL)

Musical notation for Interlude, consisting of one staff of bass clef music in G major. It shows a whole rest followed by a drum fill symbol.

Musical notation for Interlude continuation, consisting of one staff of bass clef music in G major. It shows a sequence of notes with chord markings C#m, D, C#m, D above them, and ends with a repeat sign and 'x4'.

OUTRO CHORUS

C#m D

The first staff of music shows a bass line starting with a C#m chord and a D chord. The melody consists of eighth and quarter notes, with a star symbol marking a specific note.

C#m D

The second staff continues the bass line with a C#m chord and a D chord. The melody includes a double bar line and a fermata over a note.

C#m D C#m D

The third staff features a bass line with alternating C#m and D chords. The melody ends with a double bar line.

C#m D C#m D

The fourth staff continues the bass line with alternating C#m and D chords. The melody includes a star symbol marking a note.

C#m D

The fifth staff shows a bass line with C#m and D chords. The melody consists of eighth and quarter notes.

C#m D

The sixth staff continues the bass line with C#m and D chords. The melody includes a star symbol marking a note.

C#m D C#m D

The seventh staff features a bass line with alternating C#m and D chords. The melody includes a star symbol marking a note.

W/VARIATIONS ON REPEAT

REPEAT TO FADE

C#m D C#m D

The eighth staff shows a bass line with alternating C#m and D chords. The melody includes a star symbol marking a note and ends with a double bar line.